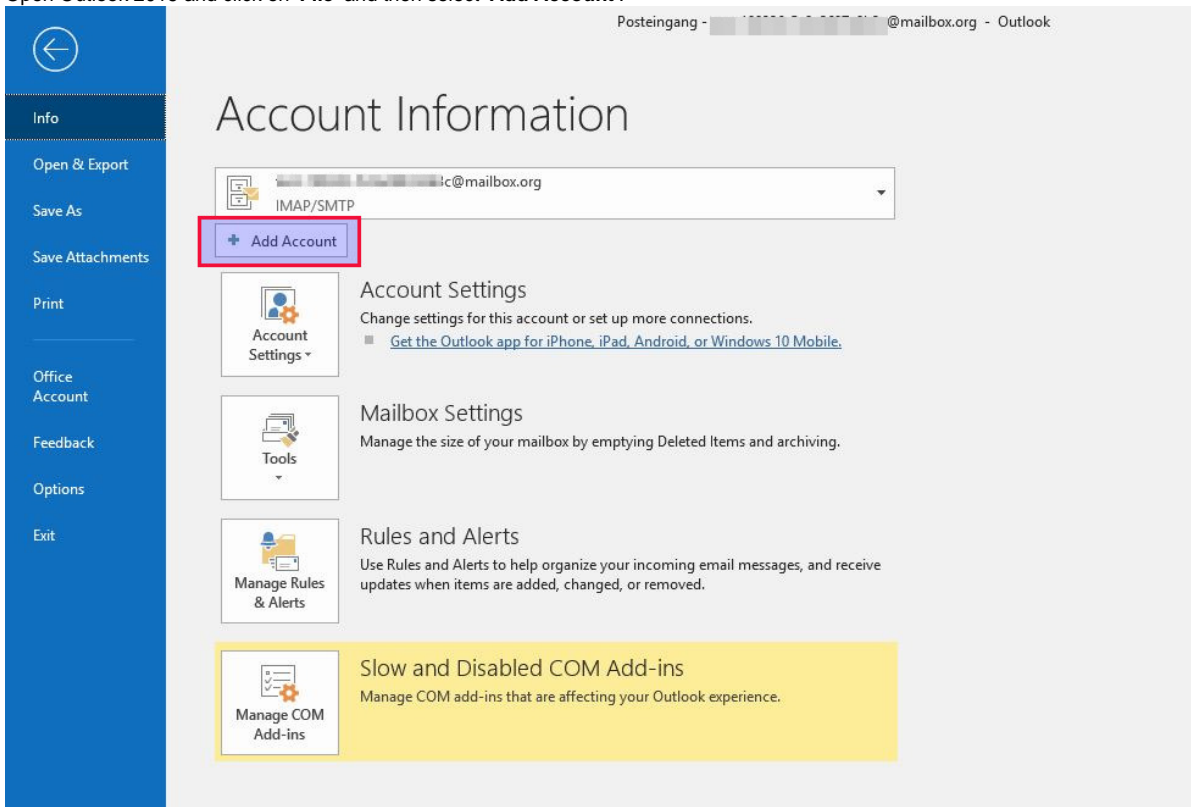


# Setup with Outlook 2016

In this guide you will learn how to set up your new [mailbox.org](http://mailbox.org) mailbox with Microsoft Outlook 2016 in just a few short steps.

Open Outlook 2016 and click on 'File' and then select 'Add Account'.



Choose 'Advanced options' and tick the box 'Let me set up my account manually' and add your mailbox.org e-mail address:

×



el@mailbox.org

Advanced options ^

Let me set up my account manually

Connect

Now choose between '**POP or IMAP**'. Typically you would choose IMAP:



 Outlook

### Advanced setup



POP



IMAP



Exchange 2013  
or earlier

[Go back](#)

Now enter your password.

## IMAP Account Settings

!@mailbox.org

[\(Not you?\)](#)

Password

[Go back](#)

Connect

Your account should have been configured automatically.

The lower field for adding an additional account is not relevant for the usage of mailbox.org and can typically be ignored.



Account successfully added



Add another email address

Advanced options ^

Let me set up my account manually



Set up Outlook Mobile on my phone, too

Now you may use Outlook 2016!

Should you require a full manual configuration of your account, you can do so by clicking on '**Account settings - Server settings**'

Our recommended configuration:

incoming mail:

Server (IMAP): [imap.mailbox.org](mailto:imap.mailbox.org) Port **993**

outgoing mail:

Server (SMTP): [smtp.mailbox.org](mailto:smtp.mailbox.org) Port **465**,

Encryption method (for both): '**SSL/TLS**'

## Verwandte Artikel

- [Ein Alias unter iOS verwenden](#)
- [Team Mail - ehemals Familienaccounts: E-Mails teilen](#)
- [Drive-Client auf Mac, PC und Smartphone](#)
- [Die Zwei-Faktor-Authentifizierung einrichten](#)
- [Den Tor-Exit-Node von mailbox.org verwenden](#)